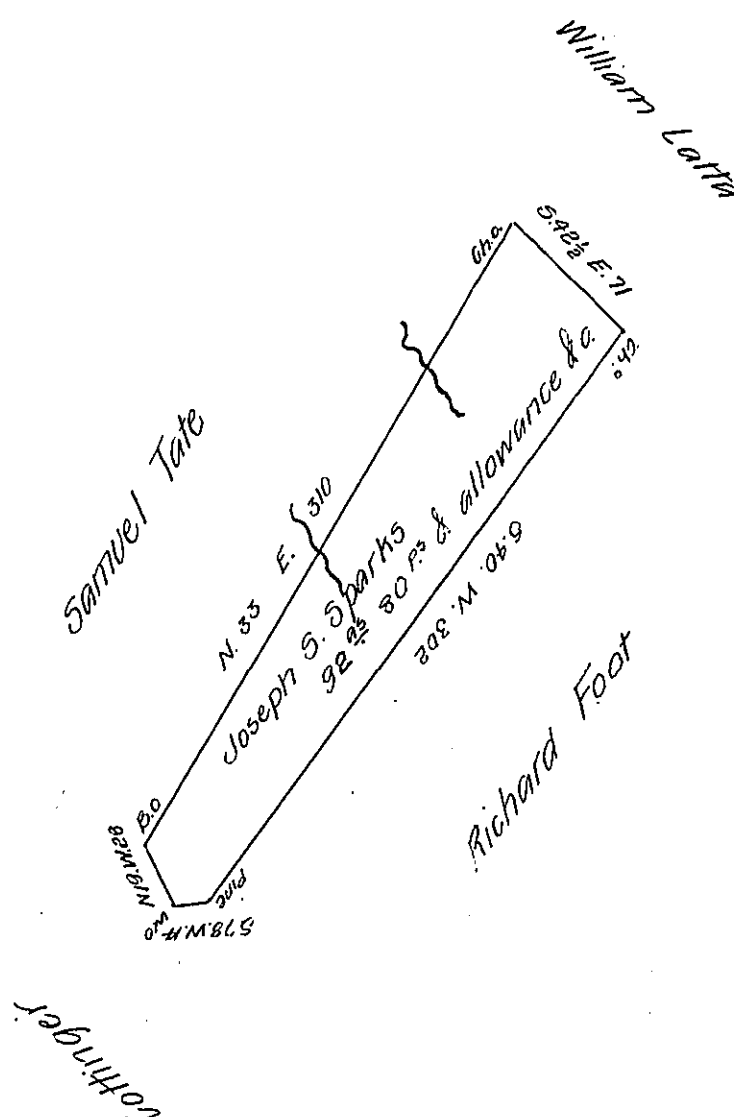


FORM NO 1.



Situate in Providence township Bedford County containing ninety two acres eighty perches and the Usual allowance of six percent for roads &c. Surveyed the 24th Aprile 1840 in pursuance of an Act of Assembly entitled an Act incorporating the Ebenezer Methodist Episcopal Congregation of the Borough of Reading and for Other purposes (passed the 16th Aprile 1840) directing the Surveyor General to grant an order of Resurvey to Joseph S. Sparks, ~~dated the~~ ^{upon} a Warrant granted to the said Joseph Sparks dated the 6 May 1833 for 87 acres &c.

Michael Reed D.S.

To Jacob Sallade Esq. S.G.

IN TESTIMONY that the above is a copy of the original remaining on file in the Department of Internal Affairs of Pennsylvania, made conformably to an Act of Assembly approved the 16th day of February, 1833, I have hereunto set my Hand and caused the Seal of said Department to be affixed at Harrisburg, this twenty fifth day of October 1907

Henry Howard
Secretary of Internal Affairs.